

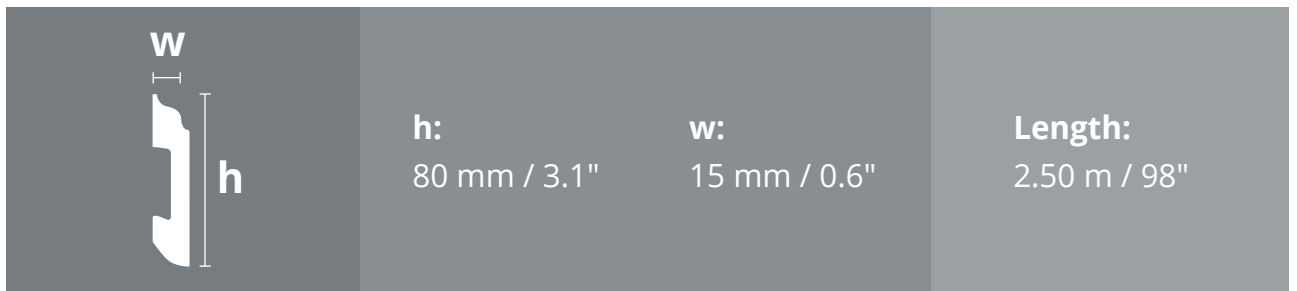
Description

Rounded baseboard or skirting board with traditional design made of recycled polystyrene that is highly shock and water resistant.

Size: 80 x 15 mm x 2.5 m / 3.1" x 0.6" x 98"



Profile



Uses and applications

- It can be installed in residential and corporate rooms.
- Recommended only for indoor spaces.
- Solution for post-construction work installation.



Advantages

- Anti-mold and water resistant.
- Anti-scratches.
- Anti-insects and anti-moths.
- 100% eco-friendly.
- Durable color.
- Easy to install.



Eco-friendly



Easy installation



Impermeable



Anti-moth



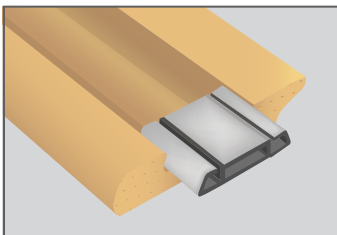
It does not deteriorate

Installation method

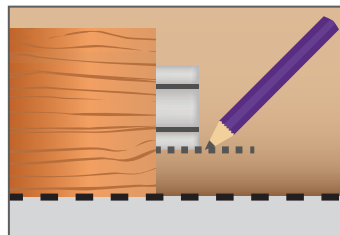
Estimate the amount of profiles according to the room perimeter, with an additional 10% to compensate for cuts. The ceramic or coating on which the profile will be placed must be previously installed.

- Make sure that the walls are clean, dry, aligned, with even surface and plumb.
- Remove the plastic wrap from the baseboards/skirting boards and apply plenty of filling adhesive or neutral silicone to the backside.
- The profile must be installed in the joint between the floor and the coating, covering the 90° angle formed by both of them.
- If you wish to attach several baseboard/skirting board strips, make a 45° cut on each end, so that they can overlap with one another.
- You can use filling adhesive or spackling paste to obtain a premium finish in the joints.
- Wipe off with a damp cloth the excess of glue immediately after installing the profile and let it dry.

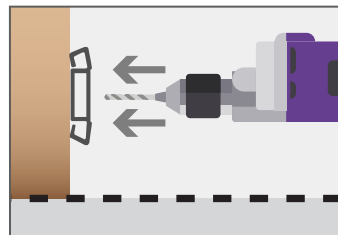
INSTALLATION WITH SQUARE MOUNTING CLIPS:



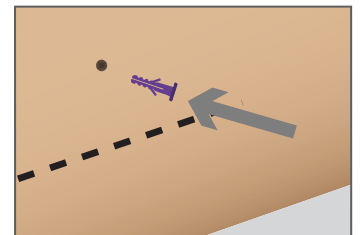
1. Put the mounting clip on the baseboard/skirting board backside.



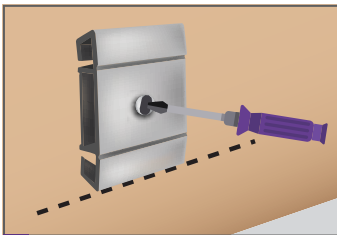
2. Place the baseboard allowing the mounting clip to protrude from its end and mark the height.



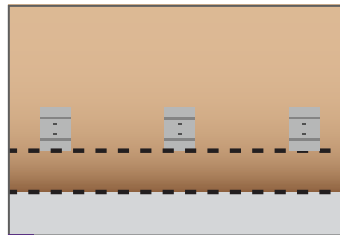
3. Place the mounting clip and drill a hole in the center until the wall is pierced.



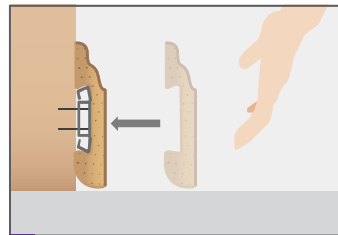
4. Insert a dowel/spike in the hole.



5. Screw in the mounting clip.



6. Repeat this sequence every 40 cm/16", leaving a distance of no less than 25 cm/10" from the ends.



7. Press the baseboard to the mounting clips until it stays firm.

Cleaning and maintenance

Mix water and alcohol or detergent and wipe off dirt with a damp cloth.

Do not use cleaners with formaldehyde to clean this product.

Avoid contact with chemical products, such as bleach/lye, acid, diluents and solvents.